



**NEW IN 2025  
CHAMPIONS SCHOOL  
RELAY EVENT**

Get your school team together.  
For the first time in SSWA history...

**CHAMPIONS SCHOOL RELAY**  
4 x 1km

See SSWA WEBSITE for details.



**SCHOOL SPORT WA  
CHAMPION SCHOOLS  
PRIMARY CROSS COUNTRY**

Wednesday 28 May 2025  
YOKINE RESERVE, YOKINE





## ACKNOWLEDGEMENTS

School Sport WA would like to thank the following people and organisations for their assistance in the presentation of this event:

- **SSWA Sport Coordinator and the Cross Country Committee**
- **Participating Schools and Competitors**
- **Course Officials and Marshalls**

## INTRODUCTION

The All Schools Cross Country Championship will be held at Yokine Reserve in 2025. The course will start and finish on the eastern side of the clubrooms in front of the spectator viewing area. Course descriptions and maps are included in this booklet.

## CARNIVAL PROCEDURES

### BACKGROUND

This booklet is designed to acquaint schools with administrative and logistical information pertinent to the conduct of a safe and efficient Cross Country Championship. School Administrators are requested to read this information and ensure all participating schools commitments are honoured, and that all student competitors are aware of Championship procedures.

#### 1. START TIME

The program will begin at 9:30am with the officials' briefing.

If schools need to travel over a distance, then there needs to be some provision for the early arrival of officials and participants to allow for events to begin on time.

**All races will start on time. Students must be at the marshalling area at least ten (10) minutes prior to the start of the race.** Competitors need to identify where the marshalling area is, well before the start. It will be situated at the end of the hill on the north side of the lower bank.

PLEASE DO NOT ALLOW STUDENTS TO ASSEMBLE AT THE START LINE.

#### Start Times:

MARSHAL	START LINE	START	EVENT	DISTANCE
		9.30am	<b>Official's briefing</b>	
9.40am	9.50am	10:00am	Girls Year 4	2000m
10.00am	10.10am	10.20am	Boys Year 4	2000m
10.20am	10.30am	10:40am	Girls Year 3	2000m
10.40am	10.50am	11.00am	Boys Year 3	2000m
11.00am	11.10am	11.20am	Girls Year 5	2500m
11.20am	11.30am	11:40am	Boys Year 5	2500m
11.40am	11.50am	12.00pm	Girls Year 6	2500m
12.00pm	12.10pm	12:20pm	Boys Year 6	2500m
12.20pm	12.35pm	12.45pm	Champions School Relay	4x1000m
		1.15pm	<b>Closing Presentations</b>	

#### NOTE:

- Competitors race is determined by their year at school NOT their age.
- K-12 Schools – Please DO NOT bring Year 7 students to this championship.
- **Individual presentations will take place soon after the conclusion of each race**

#### 2. OFFICIALS' DUTIES: **(No school officials will be required at this point in time)**

Schools entering teams of ten or more may be required to supply an official to assist with marshalling on the course. This official may be a parent or teacher.

### 3. DRINKING WATER

Water is available from a number of taps. Runners must provide their own drink containers.

### 4. CLEAN UP

Schools are responsible for cleaning up their own area before departure.

### 5. REGISTRATION

Race timing bibs will be available from the Registration Desk under the School Sport WA shelter located Schools will need to collect all of their race bibs at the start of the day (by 9.15am) and ensure that they are issued to the correct runners. Please ensure the number is accurate, as incorrect numbers will result in competitors' results not being recorded in the overall team and school results.

**Race Bibs will need to be pinned on the front of the runner's shirt.** These will need to be visible on the front of the runner's shirt at the conclusion of the race. **Please supply your own safety pins** as there will be a limited supply available from the desk.

Individual entry competitor bibs will also be available at the registration desk and **must be collected at least 30 minutes before the race start time.**

Numbers will be available on the SSWA website ([www.schoolsportwa.com.au](http://www.schoolsportwa.com.au)) as of Monday 24<sup>th</sup> May and will also be advertised on the windows of the Rugby Clubrooms on the day.

**LATE ENTRIES** will only be accepted up until 9.30am on the day. After 9.30am late entries will be able to run in the race but will not be given a bib or an official time.

### 6. PAYMENT

Payment can be made:

1. Schools - following the event, schools will be issued with a tax invoice based on the number of students from their schools.
2. Individual entrants must pay on nomination on the SSWA website at <https://www.schoolsportwa.com.au/product/cross-country-primary-champion-schools-individual-nomination-form/>

### 7. SUPERVISION & TOILETS

**Facility use and supervision are synonymous. To ensure high standards are maintained we ask that schools accept responsibility for supervising the behaviour of their own students on the day. It is a requirement that staff monitor toilets and surrounding areas.** Portable toilets will be onsite near the Clubrooms.

### 8. FIRST AID

A first aid facility will be available for injuries of a serious nature. All schools are requested to provide their own basic First Aid Kit and ice pack for injuries of a less serious nature. **Please ensure that all student competitors have eaten breakfast and are well hydrated before their race.**

### 9. RACE INFORMATION

Races will start at the programmed race time. A tent will be used as the central coordinating point. Students who register on the day may do so near the Clubrooms. All races will be run in a clockwise direction around the course. Races will start on the grassed area (on the eastern oval) in between the SSWA flags, please refer to the course maps. Competitors will run on the grassed reserve of Yokine Reserve. Marshals will be out on the course, dressed with yellow vests, and they will be directing runners around the course. In addition to this a scooter/bike will guide the leading runners around the course.

## 10. GENERAL

All competitors are expected to wear school uniform and SSWA highly recommends wearing sporting shoes (**The use of shoe spikes is not permitted**). Competitors should be prepared for all kinds of weather. Competitors are also advised to bring drinks and food. Occupational Health and Safety Guidelines demand that at an event of this nature each student must have their own water bottle.

### **ALL NEW CHAMPIONS SCHOOL RELAY**

- Teams must consist of only students who are full time attendees of the nominated school.
- Please submit names and year group of runners in the template (2<sup>nd</sup> Tab) when submitting teams.
- Teams must run in order Y3 – Y4 – Y5 – Y6
- Teams will be issued a baton which must be passed from runner to runner (can't be thrown).
- The 1km course will be clearly marked (see map)
- Teams will not be permitted to interfere with other teams in any way.
- There will be only ONE relay event on the day.
- Team composition:
  - Must consist of 4 runners
  - X2 Males and X2 Females
  - X1 student each from Yr3, Yr 4, Yr 5 and Yr 6.

## 11. FINISHING PROCEDURE

When competitors finish, they must keep moving forward and return to their schools. Schools are recommended to have a nominated staff member who can greet and collect all runners at the exit chute after crossing the finish line.

Competitors who finish in the top 10-20 in each race will be provided with details of the state trial race to be held in June, 2025 (please *check SSWA website for further details*).

## 12. SCORING

The timing system (race bibs) will determine the finish order of all competitors. Numbers allocated to each qualifying runner will be added together and aggregated. The team with the lowest aggregate will be declared the winner. In the event of a tie, the result will be resolved in favour of the team whose last scoring member finishes nearest to first place.

## 13. TROPHIES

Medals will be awarded to Individuals who place 1<sup>st</sup> 2<sup>nd</sup>, 3<sup>rd</sup> in each race straight after each event.

Team Shields will be awarded to the winning school after each race according to the scores accumulated from the finish places.

Overall Boys, Girls and Combined, will be presented at the completion of the day.

**Please note that in 2025 Year 3 events are championship point scoring races, and will go towards the overall Champion School result.**

## 14. TEAMS

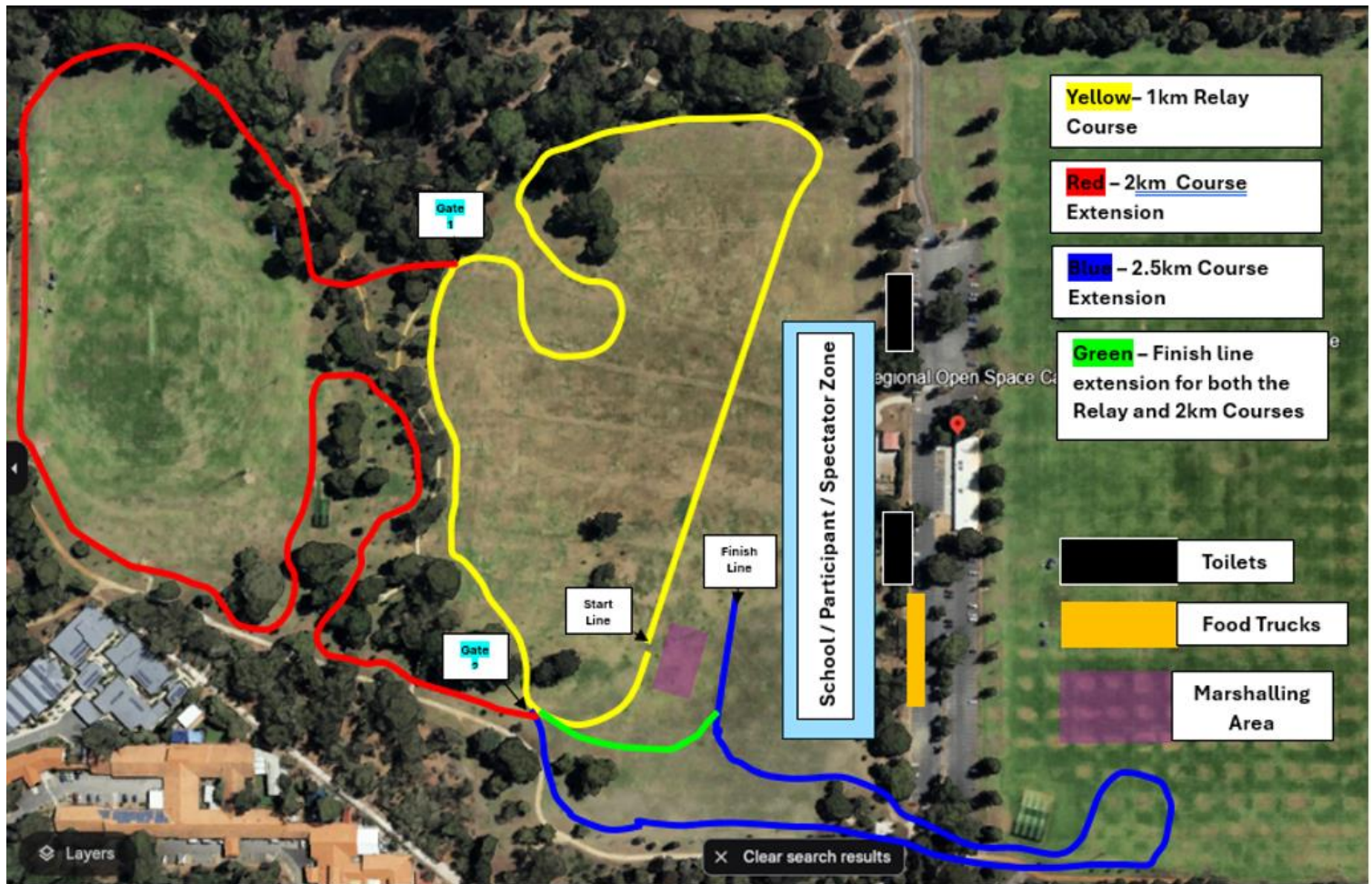
The first 4 students to complete the race in each category will qualify as the points scored for that school. To be eligible for the title of overall Champion School, schools must have a qualifying team in all age categories, male and female.

## 15. RESULTS

A full list of results will be posted on the School Sport WA website on [www.schoolsportwa.com.au](http://www.schoolsportwa.com.au).

## 16. COURSE MAPS

[Please note that maps are intended as a rough guide only and may be changed prior to or on the day.]



### The ABOVE course map caters for all distances

- 1km** All runners follow the yellow course to the start line and handover to their next runner except the final runner who follows the yellow course to Gate #2 and then diverts to the green extension through to the blue course and to the finish line.
- 2km** Start and follow the yellow course until reaching Gate #1. Then continue along the red course to Gate #2 and transferring to the green extension to the blue course and the finish line. (X1 Lap)
- 2.5km** Start and follow the yellow course until reaching Gate #1. Then continue along the red course to Gate #2 and transferring to the blue course until reaching the finish line. (X1 Lap)

## 17. SHELTER / TENTS / TOILETS

Shelter is minimal at Yokine Regional Open Space. Schools are encouraged to bring their own school tents and set them up within the designated spectator area (as per the map). Portable chemical toilets will be set up. Please speak to your students about the responsibility of keeping correct behaviour and appropriate use of the toilets.

## 18. QUESTIONS

If you have any further questions, please call the SSWA office on 6318 5712 or email [school.sport@education.wa.edu.au](mailto:school.sport@education.wa.edu.au).



## 19. PARKING / DROP OFFS / PICK UPS

### BUS DROP OFFS / PICK UPS and PARKING

#### Student Drop Off

- Student drop off southern side of reserve on **Wareana Street**. Student drop off northern side of reserve on **Wordsworth Avenue**.

#### Bus / Car Parking

- Cars in **Carparks 1 – 3** and Buses in **Yokine Districts Bowling Club** with over-flow parking at the **Terry Tyzack Aquatic Centre**



City of Stirling parking laws strictly forbid street parking along roads and verges around Yokine Reserve.

Please DO NOT enter car parks to drop off. All drop offs to be outside of the venue.

Schools are requested to follow the parking plan as stipulated by the City of Stirling.

Please ensure the parking plan is provided to:

- all bus drivers/companies
- parents are also advised
- any other school staff who may be attending throughout the day ie. school leaders.

#### Large and small buses

Be advised there is NO PARKING for buses at the venue. All buses to be drop off ONLY.

#### Cars

Cars are advised to park in one of the designated car parks (marked '**Carpark**' on the map below).

#### Bus Drop Off:

Buses have two drop off options (see '**Bus Drop Off**' on the map below):

1. Drop off at the Western end of WORDSWORTH AVE. Schools then walk across the ovals.
2. Drop off on WAREANA ST. Head East along Bradford, left into Glick, right into Wareana.

**BUSES – PLEASE DO NOT DROP OFF ON ALEXANDER DRIVE.**

#### Bus Pick Up:

Buses picking up students are to use Wordsworth Ave

**YOKINE RESERVE** map indicating bus and car parking areas below: *Bus parking area(s) to still be confirmed by the City of Stirling.*