

# 2024

## SCHOOL SPORT WA CHAMPION SCHOOLS PRIMARY SWIMMING CARNIVAL

Monday 22 April 2022  
HBF Stadium, Mt Claremont



# CONTENTS

	<b>Page</b>
Background and Acknowledgments	2
Carnival Procedures and Swimming Divisions	3, 4
Administration	5
Conduct of Events	6
Presentations	6
Duty Allocation for Participating Schools' Official's	7
Duties of Officials	8,9
Duties of Student Officials	9
Pool Layout / Seating Plan	10
Stroke Technique and Rules	10 – 12
HBF Stadium Parking	13
2023 Results and Results History	14
Program of Events	15,16

**SCHOOL SPORT WA**  
**PRIMARY SWIMMING CARNIVAL**  
**Monday, 22 April 2024 GOLD (A) & BLACK (B) Divisions**  
**HBF Stadium**  
**9.30 am – 2.20 pm**

**BACKGROUND**

The Primary Schools' Swimming Carnival was re-introduced by School Sport WA in 1988 when six schools competed at Beatty Park. The move to Challenge Stadium (now HBF Stadium) in 1997 enabled schools and participants to utilise the improved technology and in particular the chance to appreciate swimmer times presented on the electronic display board at the conclusion of each race.

We welcome all schools to the competition and wish them every success.

**ACKNOWLEDGMENTS**

- The assistance of the HBF Stadium staff is gratefully acknowledged.
  
- Thanks to the School Sport WA office staff who contribute many hours to the preparation and organisation of the carnivals.
  
- The support of Swimming WA is recognised.
  
- Any event such as this would not be possible without the support of volunteer officials. Their efforts, the work of the dedicated teachers and coordinators in the preparation of the school swim teams is highly commended.

# CARNIVAL PROCEDURES

## CONDITIONS

1. Schools will provide a **complete team list** of their swimming team on the template which is downloaded from the website and **submit it by email to** [school.sport@education.wa.edu.au](mailto:school.sport@education.wa.edu.au)
2. Events are conducted in **YEAR GROUPS**.
3. During the event, if an existing year group record is broken it will only be recognised if the student falls within the accepted age cut-offs for that year group (**see table below**).

Year Group	Age Cut-offs
<b>Year 4</b>	1 July 2014 – 30 June 2015
<b>Year 5</b>	1 July 2013 – 30 June 2014
<b>Year 6</b>	1 July 2012 – 30 June 2013

4. All swimmers must have their **Year Group** marked clearly on their **left arm with a permanent felt marker pen** – approx 8cm tall. This will assist marshals in ensuring that swimmers are competing in the correct year group.
5. One representative per school per event.
6. Open events (if any) are available to swimmers of any year.
7. Schools must indicate to the recorders and Chief Marshal that a swimmer is swimming out of year group.
8. Not counting relays, competitors are limited to a maximum of **THREE (3)** individual events. These can be a combination of year or open events, however swimmers cannot compete in both Division A and B (or C or D) of the same stroke.
9. It is recommended that competitors wear swimming caps but is not compulsory.
10. No Technical / Performance Race Suits will be allowed as per [Swimming WA Competition Policy \(1<sup>st</sup> May 2018\)](#). Non-bonded swimwear in a knee suit (for girls) and jammers (boys) is allowed.
11. Teams will swim in the same lane for each event.
12. **2024 Carnival Divisions**  
Schools have been graded in 2024 according to their results in 2023. Some adjustments may be made to cater for nomination variations due to changing schools' status.

LANE	GOLD CARNIVAL (A)	BLACK CARNIVAL (B)
1	Mt Lawley PS	
2	Manning PS	Inglewood PS
3	Floreat Park PS	South Perth PS
4	Carine PS	Karrinyup PS
5	Subiaco PS	Sorrento PS
6	Wembley PS	Collier PS
7	Como PS	Coolbinia PS
8	Bull Creek PS	

[Note: Lanes are filled in the following order based on finishing position in the previous year. 4, 5, 3, 6, 2, 7, 1, 8. Promoted schools fill lanes 1 and 8 (depending on nominations), demoted schools fill lanes 4 and 5].

**Please Note:** Lanes remain constant for the carnival duration.

13. Points will be awarded to each competitor/team in all events as follows:

**Individual swim events**

GOLD A and BLACK A Divisions: 12, 9, 7, 5, 3, 2, 1, 1

GOLD B and BLACK B Divisions: 9, 7, 5, 3, 2, 1, 1, 1

GOLD C and BLACK C Divisions: 7, 5, 3, 2, 1, 1, 1, 1

GOLD D and BLACK D Divisions: 7, 5, 3, 2, 1, 1, 1, 1

**Relays:** 24, 18, 14, 10, 6, 4, 2, 1

14. We will be using a computerised scoring system. Schools are asked to maintain a careful register of their team.

15. Honour certificates will be awarded to first, second and third placegetters.

16. A Champion School Shield will be awarded to the winning team.

17. A Meritorious Shield is also awarded and is calculated as total number of points achieved for the carnival divided by the school population (Yrs 4 - 6). A school cannot win both the Champion School Shield and the Meritorious Shield at the same carnival. If a school finishes top for both shield calculations the second placed school will be awarded the Meritorious Shield. School population numbers will be taken from the Department of Education school numbers data.

18. Year Group Champions - Points will be allocated to students who compete in A Division events and in other events for which they are eligible by year group i.e. underage or open events if they are included in the program. The points gained will be credited to their year grouping and will be allocated according to the points gained by the school event.

**Please note: ONLY A Division swimmers accumulate Championship points**

**A Division event 12, 9, 7, 5, 3, 2, 1, 1**



# ADMINISTRATION

- 1 Schools are responsible for their own transport arrangements, general first aid requirements and team organisation. Designated first aid personnel will attend to treat more serious medical situations.
- 2 The pool entry cost is **\$4.80** per student and SSWA will record your swim team numbers on the day and issue an invoice for nomination fee and pool entry.
- 3 Parents' and friends' entry fee **\$2.60** is payable at the pool entrance desk.
- 4 Seating arrangements - Using the allocated lane number, schools will be placed in specific seating areas. Please check the map provided.
- 5 School swimmers or spectators are not permitted to leave their allocated area except under the direction of team officials (toilet breaks, compete in events etc).
- 6 Schools to supply copies of the 'Program of Events' for spectators.
- 7 Only competitors may enter the water.
- 8 Carnival officials will be permitted to walk the pool deck. Spectators and competitors are not permitted on the pool deck and must also adhere to instructions given regarding movement to and from events.
- 9 **Officials**
  - This carnival could not operate without considerable support from teacher officials.
  - **Each school must provide student officials** (detailed later in this booklet).
  - An outline of the duties for each official is contained in this booklet. Officials will be briefed prior to the carnival.
  - **Officials are not required to pay an entry fee.**
  - All officials to report to the Carnival Manager by 9.15am.
- 10 All participating schools are to provide a mobile phone contact number of a staff member who is attending the event. This is to enable event officials to contact a school staff member for information or in case of emergency.
- 11 Schools are advised that an official photographer may be in attendance to take event photos. Please inform SSWA event officials of any restrictions for photos.

## CONDUCT OF EVENTS

- 1 Team Marshals are responsible for ensuring that their swimmers are ready well before the event.
- 2 Team Marshals are to organise their competitors to report to the Chief Marshal at the 50m start area of the pool at least six (6) events prior to their event.
- 3 The Start Marshal sits the competitors behind the appropriate lane (chairs will be provided) and will assist the Chief Marshal as required.
- 4 Prior to the carnival, teachers should instruct their students to the following procedures:

### Start Procedure:

#### Signal from Chief Referee

- (a) Whistle blast

#### Swimmer's Action

Step onto the block, stand steady  
Listen and relax.

#### Signal from Starter

- (b) "Take your mark"

Move to the normal start position,  
Wait in a steady position.

- (c) Horn

Go!

### Finish Procedure:

- (a) Swim hard to the finish and **touch firmly**.
  - (b) Move back from the wall. Do not hang off the wall. **Stay in the allocated lane.** Rest on the lane rope until the judges confirm the correct result. The Referee will signal by whistle for the swimmers to leave the pool.
  - (c) Competitors leave the pool **via the steps**. The first three place getters are to follow an Announcer's Assistant to the presentation dais and wait to be announced. Non-placegetters return to their team assembly area.
- 5 Medley Relay
- The order of strokes for the medley relay is: Backstroke, Breaststroke, Butterfly and Freestyle.

## PRESENTATIONS

- After the last event Team Captains and Year Group Champions will gather at the presentation area.
- Team Captains should have their school flag and/or mascot with them for the presentation.
- Competitors and spectators will remain in their allocated school area.

# CARNIVAL OFFICIAL'S DUTY ALLOCATION

Monday 22<sup>nd</sup> April

## SSWA OFFICIALS

CARNIVAL MANAGER	Alex McLennan
REFEREE	SWA x2

## STUDENT OFFICIALS

False Start Rope	Manning
Announcer's Assistants	Wembley
Finish Assistants - Placing	Mt Lawley
Poolside Recorder Assistants	Floreat Park / Como
Computer Room Assistants	Sorrento
Timing Officials	Carine / Bull Creek / Inglewood / Coolbinia / Collier / Sth Perth / Subiaco / Karrinyup

These schools are also asked to provide at least **two 'responsible' student officials** to assist with carnival duties. (It is suggested that schools should bring four student helpers and rotate them throughout the day 2 on / 2 off)

## DUTIES OF STAFF OFFICIALS

### CARNIVAL MANAGER (School Sport WA Representative)

- Responsible for the overall organisation and operation of the carnival.

### REFEREE (Swimming WA accredited official)

**PRE-REQUISITE** - Must have a thorough knowledge of swimming, swimming laws and carnival procedures.

- Referees will be positioned on both sides of the pool to observe the stroking of competitors during each race.
- The Assistant Referees have no power to disqualify but may recommend to the Referee that a certain lane should be disqualified for certain infringements.
- Act as referees for relay changeovers for the first and third change.
- He / she should signal the starter by a whistle blast to start the next event.
- To clear the pool at the conclusion of each race.

### STARTER (School Sport WA Representative)

- The Starter assumes control of the competitors from the time they step up onto their blocks until after the signal to start has been given.
- The Starter must explain to the competitors:
  - The method of starting the race (may be done by Assistant Starter).
  - When the whistle is blown by the Referee, the competitors will position themselves on to their blocks.
  - When the Starter gives the command "Take Your Marks" **All** competitors will immediately and without delay assume their starting position.
- Once all competitors are perfectly still, the signal to start by hooter, is given and false start rope lowered.
- FALSE START occurs, the hooter blown to recall competitors.
- The Starter shall recall the competitors after the FIRST FALSE START and, as a group, inform them that should any competitor be responsible for a further false start, regardless of whether or not they caused the previous false start/s, they shall be disqualified, and the event will run.



### **CHIEF MARSHAL (School Sport WA Representative)**

- Chief Marshal is responsible for ensuring that all competitors are seated appropriately by lane in the marshaling area at least eight events ahead of the starter.
- Student Assistants may be provided.

### **ASSISTANT MARSHALS (School Sport WA Representative)**

- Marshaling competitors prior to events is a very important aspect of the carnival.
- The Marshal shall ensure the events are run in the correct order.
- A lane draw sheet will tell the Marshal the correct lane for each school.
- Only marshal one age group at a time.
- Call the competitor's school and lane number and direct each competitor to line up behind the start - seated behind respective lanes.

### **CHIEF FINISH MARSHAL (School Sport WA Representative)**

- Assists referees when called upon
- Controls the safe exit of the pool at the end of each race.
- Marshals relay swimmers (1 & 3)
- Communicates with the Finish Marshal at all times.
- Communicates to placegetters what they are required to do once exiting the pool.
- Oversees the Timekeepers.

### **FINISH MARSHAL (School Sport WA Representative)**

- Assists Chief Finish Marshal as their eyes and ears on the opposite side of the pool.
- Assists with clearing the pool upon receiving the 'All Clear' from the Chief Finish Marshal after each race or relay swim leg.
- Assist with marshalling relay swimmers (1 & 3)

### **ANNOUNCER (School Sport WA Representative)**

- The Announcer has a very important role at all swim meets and must be conversant with arrangements regarding the meet.
- The Announcer will make all announcements pertaining to the meet.
- It is the Announcer's prerogative to break and provide commentary of the races, particularly if a record time appears to be possible. Announcer will be supplied with this information.

### **DIVING POOL SUPERVISORS**

- Responsible for ensuring that students are using the diving pool for warm-up and warm-down purposes only.

## **DUTIES OF STUDENT OFFICIALS**

### **FALSE START ROPE**

- Take control of the false start rope when the Referee blows the whistle indicating the race is about to start.
- In the event of a false start, which is signaled by the Starter sounding the hooter again, the Rope Stewards shall immediately lower the rope and hold it stretched tight on the surface of the water thereby preventing any competitor from continuing the race.

### **ANNOUNCER'S ASSISTANTS**

- The first 3 place getters will be required to assemble at the presentation dais and be announced.

### **POOLSIDE RECORDERS**

- Ensure results copies are taken immediately to;
  - the computer recording station, and
  - the announcer
- Record name and school of all competitors in school lane order before each event. (*IF required*)

### **TIMEKEEPERS**

- Manually operate the timing buttons in each lane at the finish end of the pool
- These are a backup for the computer operator.

## COMPUTER ROOM ASSISTANTS

- Assist with certificates, collating results and problem solving as required.

## POOL DECK / FINISH LINE ASSISTANTS

- Tasks as required at the time, i.e. replacing Timekeepers; assisting Dive Pool Official; directing swimmers exiting the pool.

# HBF STADIUM SEATING PLAN: INDOOR 50M POOL

Seating		Pool 50m Start		Poolside Recorders	
<b>Bull Creek</b>	<b>Como</b>	Dais	POOL	Announcer	Marshalling Area
<b>Sth Perth</b>	<b>Coolbinia</b>				Marshalling Area
<b>Collier</b>	<b>Mt Lawley</b>				Marshalling Area
<b>Manning</b>	<b>Floreat Pk</b>				
<b>Karrinyup</b>	<b>Sorrento</b>				
<b>Inglewood</b>	<b>Subiaco</b>				
<b>Wembley</b>	<b>Carine</b>				
Judges					
<i>Parents</i>	<i>Parents</i>	<i>100m / Relay Starts / Finish Line</i>			

## TECHNIQUE & RULES

### BREASTSTROKE TECHNIQUE

- SW 7.1**
- From the beginning of the first arm stroke after the start and after each turn, the body shall be kept on the breast.
  - It is not permitted to roll onto the back at any time.
  - Throughout the race the stroke cycle must be one arm stroke and one leg kick in that order.
- SW 7.3**
- The hands shall be pushed forward together from the breast on, under, or over the water.
  - The elbows shall be under water except for the final stroke before the turn, during the turn and for the final stroke at the finish.
  - The hands shall be brought back on or under the surface of the water. The hands shall not be brought back beyond the hip line, except during the first stroke after the start and each turn.
- SW 7.2**
- All movements of the arms shall be simultaneous and in the same horizontal plane without alternating movement.
- SW 7.4**
- During each complete cycle, some part of the swimmer's head shall break the surface of the water.
  - After the start and after each turn, the swimmer may take one arm stroke completely back to the legs.
  - The head must break the surface of the water before the hands turn inward at the widest part of the second stroke.

- A single downward Butterfly kick followed by a breaststroke kick is permitted while wholly submerged.
  - Following which, all movements of the legs shall be simultaneous and in the same horizontal plane without alternating movement.
- SW 7.5**
- The feet must be turned outwards during the propulsive part of the kick.
  - A scissors, flutter or downward Butterfly kick is not permitted except as in SW 7.4.
  - Breaking the surface of the water with the feet is allowed unless followed by a downward dolphin kick.
- SW 7.6**
- At each turn and at the finish of the race, the touch shall be made with both hands simultaneously at, above, or below the water level.
  - The head may be submerged after the last arm pull prior to the touch, provided it breaks the surface of the water at some point during the last complete or incomplete cycle preceding the touch.

## **BUTTERFLY SWIMMING**

- SW 8.1**
- From the beginning of the first arm stroke after the start and each turn, the body shall be kept on the breast.
  - Under water kicking on the side is allowed. It is not permitted to roll onto the back at any time.
- SW 8.2**
- Both arms shall be brought forward together over the water and brought backward simultaneously through-out the race, subject to SW 8.5
- SW 8.3**
- All up and down movements of the legs must be simultaneous.
  - The legs or the feet need not to be on the same level, but they shall not alternate in relationship to each other.
  - A breaststroke kicking movement is not permitted.
- SW 8.4**
- At each turn and at the finish of the race, the touch shall be made with both hands simultaneously, at, above or below the water surface.
- SW 8.5**
- At the start and at turns, the swimmer is permitted one or more leg kicks and one arm pull under water, which must bring him to the surface.
  - It shall be permissible for a swimmer to be completely submerged for a distance of not more than 15 metres after the start and after each turn.
  - By that point, the head must have broken the surface.
  - The swimmer must remain on the surface until the next turn or finish.

## **BACKSTROKE SWIMMING**

- SW 6.1**
- Prior to the starting signal, the swimmers shall line up in the water facing the starting end, with both hands holding the starting grips.
  - Standing in or on the gutter or bending the toes over the lip of the gutter is prohibited.
- SW 6.2**
- At the signal for starting and after turning the swimmer shall push off and swim upon his back throughout the race except when executing a turn as set forth in SW 6.4.
  - The normal position on the back can include a roll movement of the body up to, but not including 90 degrees from the horizontal.
  - The position of the head is not relevant.
- SW 6.3**
- Some part of the swimmer must break the surface of the water throughout the race.
  - It is permissible for the swimmer to be completely submerged during the turn, at the finish and for a distance of not more than 15 metres after the start and each turn.
  - By that point the head must have broken the surface.
- SW 6.4**
- When executing the turn there must be a touch of the wall with some part of the swimmers body.
  - During the turn the shoulders may be turned over the vertical to the breast after which a continuous single arm pull or a continuous simultaneous double arm pull may be used to initiate the turn.
  - The swimmer must have returned to the position on the back upon leaving the wall.
- SW 6.5**
- Upon the finish of the race the swimmer must touch the wall while on the back.

## FREESTYLE SWIMMING

- SW 5.1**
- Freestyle means that in an event so designated the swimmer may swim any style, except that in individual medley or medley relay events, freestyle means any style other than Backstroke, Breaststroke or Butterfly.
- SW 5.2**
- Some part of the swimmer must touch the wall upon completion of each length and at the finish.
- SW 5.3**
- Some part of the swimmer must break the surface of the water throughout the race, except it shall be permissible for the swimmer to be completely submerged for not more than 15 metres after the start and each turn.
  - By that point the head must have broken the surface.

## THE START

- SW 4.1**
- The start in Freestyle, Breaststroke, Butterfly and individual medley races shall be with a dive.
  - On the long whistle from the Referee the swimmers shall step onto the starting platform and remain there.
  - On the Starters command "Take your marks" they shall immediately take up a starting position with at least one foot at the front of the starting platform.
  - The position of the hands is not relevant. When all swimmers are stationary, the starter shall give the starting signal.
- SW 4.2**
- The start in Backstroke and Medley Relay races shall be from the water. At the referee's first long whistle the swimmers shall immediately enter the water. At the referees second long whistle the swimmers shall return without undue delay to the starting position (SW 6.1). When all swimmers have assumed their starting positions, the starter shall give the command "take your marks". When all swimmers are stationary, the starter shall give the starting signal
- SW 4.4**
- Any swimmer starting before the starting signal has been given, shall be disqualified.
  - If the starting signal sounds before the disqualification is declared, the race shall continue and the swimmer or swimmers shall be disqualified upon completion of the race.
  - If the disqualification is declared before the starting signal, the signal shall not be given, but the remaining swimmers shall be called back and start again. For these school carnivals the swim meet director can alter this rule to allow either 2 or 3 breaks before declaring a disqualification.
  - ***Schools in C, D & E Division will be afforded a 2 start rule whilst the A & B Division schools will be under the "One Start" rule.***

## MEDLEY RELAY

- In a Medley team event relay, each team shall consist of four (4) members who shall swim respectively Backstroke, Breaststroke, Butterfly and Freestyle, in that order.

## RELAYS

- In all relays the outgoing swimmer cannot leave the starting block until the incoming swimmer has contacted the pool end.
- If a swimmer does leave before the incoming swimmer has contacted the pool end, the team shall be disqualified.

**\*\*The Referee will determine the level of leniency in applying the rules.**

# HBF STADIUM - PARKING

## For students being dropped off and collected by parents

- Please ensure that all parents are aware of the locations of the drop off / pick up zones.
- Drop off / pick up zones are strictly 5 minutes only and drivers must remain with the vehicle at all times.
- These are the only areas where drop offs and pickups are to occur.

**Drop off / pick up zone 1:** located on the right hand side of the Stadium. Turn right at the roundabout and enter into the first entryway, following the loop around to exit via the roundabout.

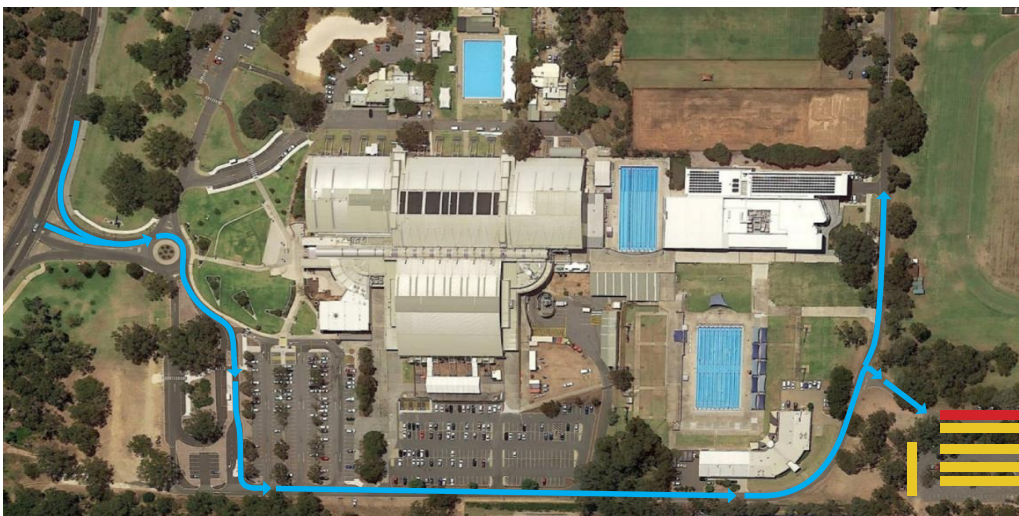
**Drop off / pick up zone 2:** located on the left hand side of the Stadium. Turn left at the roundabout and enter into the first entryway on the right.

- At the conclusion of the carnival ALL students must be collected from the drop off / pick up zones.
- Parking attendants will be on duty to direct traffic and we ask that all drivers follow their directions.
- Parents and spectators park in the HBF Stadium car park and enter the Stadium through the front entrance.

## Buses

- Schools are to make their own bus arrangements.
- The carnivals will commence at –
  - 9.45am sharp for Division 3 & 4 (formerly known as C & D Divisions),
  - 9.35am for Divisions 1 & 2 (formerly known as A & B Divisions) and
  - 9.40am for Division 5 (formerly known as E Division) and finish no later than 2.20pm.
- Arrival no later than 8.45am is strongly recommended.
- It is essential that schools provide this information to their bus company/drivers and supervising staff so that the correct procedures are adhered to.
- Buses will enter via Stephenson Ave, through the HBF Stadium car park and drop students in the AJ Pavilion car park and then students must make their way to the back gate (Gate C) of HBF Stadium.
- Students can then access the Aquatic Centre via the concourse.
- Students must be supervised during the entry to the centre.
- Buses will be able to park in the AJ Pavilion parking area at UWA Sports Park.
- All buses are asked **NOT** to wait on McGillivray Rd but in the AJ Pavilion parking area.
- All buses are to leave the area through the Brockway Road exit.
- Traffic wardens will be on duty to direct all buses.

**No school groups should enter or exit via the main HBF Stadium entrance. Parents may enter this way.**



No drop off in red zone.

Please park in top areas of car park to allow other egressing buses through.

## 2023 RESULTS

GOLD [A Division]			BLACK [B Division]		
PLACE	SCHOOL	POINTS	PLACE	SCHOOL	POINTS
1 <sup>st</sup>	Carine PS	395	1 <sup>st</sup>	Como PS	427
2 <sup>nd</sup>	Subiaco PS	371	2 <sup>nd</sup>	Mt Lawley PS	319
3 <sup>rd</sup>	Floreat PS	367	3 <sup>rd</sup>	Sorrento PS	316
4 <sup>th</sup>	Wembley PS	353	4 <sup>th</sup>	South Perth PS	292
5 <sup>th</sup>	Manning PS	241	5 <sup>th</sup>	Collier PS	238
6 <sup>th</sup>	Karrinyup PS	195	6 <sup>th</sup>	Inglewood PS	209
7 <sup>th</sup>	Guildford PS	161	7 <sup>th</sup>	Coolbinia PS	201
			8 <sup>th</sup>	Gingin DHS	128

## RESULTS HISTORY

	CHAMPION SCHOOL DIVISION WINNERS		MERITORIOUS SHIELD WINNERS	
	GOLD DIVISION	BLACK DIVISION	GOLD DIVISION	BLACK DIVISION
2023	Carine PS	Como PS	Floreat Park PS	Collier PS
2022	Wembley PS	Como PS	Subiaco PS	Collier PS
2021	Carine PS	Como PS	Subiaco PS	Collier PS
2019	Subiaco PS	Manning PS	Floreat PS	South Perth PS
2018	Subiaco PS	Coolbinia PS	Floreat PS	Como PS
2017	Floreat PS	Mt Lawley PS	Subiaco PS	Coolbinia PS
2016	Wembley PS	Coolbinia PS	Floreat PS	Sorrento PS
2015	Wembley PS	Carine PS	Floreat PS	Mt Lawley PS
2014	Wembley PS	South Perth PS	Floreat PS	Coolbinia PS
2013	Floreat PS	Coolbinia PS	Mt Lawley PS	South Perth PS
2012	Floreat PS	South Perth PS	Mt Lawley PS	Coolbinia PS
2011	Subiaco PS	Floreat PS	Marmion PS	Mt Lawley PS
2010	Wembley PS	Floreat PS	Subiaco PS	Mt Lawley PS
2009	Wembley PS	South Perth PS	Floreat Park	Mt Lawley
2008	Floreat Park PS	Wembley PS	Floreat Park	Wembley
2007	Carine PS	Kensington PS	South Perth	Mullaloo Heights
2006	Carine PS	South Perth PS	Marmion	South Perth
2005	Sorrento PS	South Perth PS	Floreat Park PS	Collier PS
2004	Carine PS	Mullaloo Beach PS		
2003	Sorrento PS	Rostrata PS		
2002	Carine PS			

**2024 PRIMARY SWIMMING CARNIVAL  
PROGRAM OF EVENTS & CURRENT RECORD HOLDERS**  
[Updated April 10, 2024]

			Record Holder	School	Record	Year
<b>50m Freestyle</b>						
9.30	1	Boys Yr 6 BLACK Div D				
9.32	2	Girls Yr 6 BLACK Div D				
9.34	3	Boys Yr 6 GOLD Div D				
9.36	4	Girls Yr 6 GOLD Div D				
9.38	5	Boys Yr 6 BLACK Div C				
9.40	6	Girls Yr 6 BLACK Div C				
9.42	7	Boys Yr 6 GOLD Div C				
9.44	8	Girls Yr 6 GOLD Div C				
9.46	9	Boys Yr 6 BLACK Div B				
9.48	10	Girls Yr 6 BLACK Div B				
9.50	11	Boys Yr 6 GOLD Div B				
9.52	12	Girls Yr 6 GOLD Div B				
9.54	13	Boys Yr 6 BLACK Div A				
9.56	14	Girls Yr 6 BLACK Div A				
9.58	15	Boys Yr 6 GOLD Div A	Brodie Moir	Collier	31.54	2022
10.00	16	Girls Yr 6 GOLD Div A	Emily Barwick	Coolbinia	31.38	2018
10.02	17	Boys Yr 5 BLACK Div D				
10.04	18	Girls Yr 5 BLACK Div D				
10.06	19	Boys Yr 5 GOLD Div D				
10.08	20	Girls Yr 5 GOLD Div D				
10.10	21	Boys Yr 5 BLACK Div C				
10.12	22	Girls Yr 5 BLACK Div C				
10.14	23	Boys Yr 5 GOLD Div C				
10.16	24	Girls Yr 5 GOLD Div C				
10.18	25	Boys Yr 5 BLACK Div B				
10.20	26	Girls Yr 5 BLACK Div B				
10.22	27	Boys Yr 5 GOLD Div B				
10.24	28	Girls Yr 5 GOLD Div B				
10.26	29	Boys Yr 5 BLACK Div A				
10.28	30	Girls Yr 5 BLACK Div A				
10.30	31	Boys Yr 5 GOLD Div A	Brodie Moir	Collier	33.15	2021
10.32	32	Girls Yr 5 GOLD Div A	Freya Weston	Sorrento	33.09	2016
10.34	33	Boys Yr 4 & U BLACK Div D				
10.36	34	Girls Yr 4 & U BLACK Div D				
10.38	35	Boys Yr 4 & U GOLD Div D				
10.40	36	Girls Yr 4 & U GOLD Div D				
10.42	37	Boys Yr 4 & U BLACK Div C				
10.44	38	Girls Yr 4 & U BLACK Div C				
10.46	39	Boys Yr 4 & U GOLD Div C				
10.48	40	Girls Yr 4 & U GOLD Div C				
10.50	41	Boys Yr 4 & U BLACK Div B				
10.52	42	Girls Yr 4 & U BLACK Div B				
10.54	43	Boys Yr 4 & U GOLD Div B				
10.56	44	Girls Yr 4 & U GOLD Div B				
10.58	45	Boys Yr 4 & U BLACK Div A				
11.00	46	Girls Yr 4 & U BLACK Div A				
11.02	47	Boys Yr 4 & U GOLD Div A	Mitchal Ainsworth	Wst Greenwood	35.72	1995
11.04	48	Girls Yr 4 & U GOLD Div A	Crystal Edwards	Carine	34.75	2013
11.05	49	50m ALL ABILITIES				
<b>50m Breaststroke</b>						
11.06	50	Boys Yr 6 BLACK Div B				
11.08	51	Girls Yr 6 BLACK Div B				
11.10	52	Boys Yr 6 GOLD Div B				
11.12	53	Girls Yr 6 GOLD Div B				
11.14	54	Boys Yr 6 BLACK Div A				
11.16	55	Girls Yr 6 BLACK Div A				
11.18	56	Boys Yr 6 GOLD Div A	Ethan Potter	Subiaco	40.45	2021
11.20	57	Girls Yr 6 GOLD Div A	Emily Barwick	Coolbinia	40.55	2018
11.22	58	Boys Yr 5 BLACK Div B				
11.25	59	Girls Yr 5 BLACK Div B				

11.28	60	Boys Yr 5 GOLD Div B				
11.31	61	Girls Yr 5 GOLD Div B				
11.34	62	Boys Yr 5 BLACK Div A				
11.36	63	Girls Yr 5 BLACK Div A				
11.38	64	Boys Yr 5 GOLD Div A	Remy Fischer	Floreat Park	43.05	2023
11.40	65	Girls Yr 5 GOLD Div A	Emily Barwick	Coolbinia	43.40	2017
11.42	66	Boys Yr 4 & U BLACK Div B				
11.44	67	Girls Yr 4 & U BLACK Div B				
11.46	68	Boys Yr 4 & U GOLD Div B				
11.48	69	Girls Yr 4 & U GOLD Div B				
11.50	70	Boys Yr 4 & U BLACK Div A				
11.52	71	Girls Yr 4 & U BLACK Div A				
11.54	72	Boys Yr 4 & U GOLD Div A	Remy Fisher	Floreat Park	47.80	2022
11.56	73	Girls Yr 4 & U GOLD Div A	Crystal Edwards	Carine	47.78	2013
<b>4 x 50m Open Medley Relay</b>						
11.58	74	Open Boys BLACK				
12.03	75	Open Girls BLACK				
12.08	76	Open Boys GOLD		Wembley	2.31.16	2014
12.13	77	Open Girls GOLD		Rostrata	2.29.44	2003
<b>50m Backstroke</b>						
12.18	78	Boys Yr 4 & U BLACK Div B				
12.20	79	Girls Yr 4 & U BLACK Div B				
12.22	80	Boys Yr 4 & U GOLD Div B				
12.24	81	Girls Yr 4 & U GOLD Div B				
12.26	82	Boys Yr 4 & U BLACK Div A				
12.28	83	Girls Yr 4 & U BLACK Div A				
12.30	84	Boys Yr 4 & U GOLD Div A	Ross Briggs	Connolly	40.88	2002
12.32	85	Girls Yr 4 & U GOLD Div A	Crystal Edwards	Carine	41.99	2013
12.34	86	Boys Yr 5 BLACK Div B				
12.36	87	Girls Yr 5 BLACK Div B				
12.38	88	Boys Yr 5 GOLD Div B				
12.40	89	Girls Yr 5 GOLD Div B				
12.42	90	Boys Yr 5 BLACK Div A				
12.44	91	Girls Yr 5 BLACK Div A				
12.46	92	Boys Yr 5 GOLD Div A	Ross Briggs	Connolly	38.67	2003
12.48	93	Girls Yr 5 GOLD Div A	Emily Barwick	Coolbinia	40.75	2017
12.50	94	Boys Yr 6 BLACK Div B				
12.52	95	Girls Yr 6 BLACK Div B				
12.54	96	Boys Yr 6 GOLD Div B				
12.56	97	Girls Yr 6 GOLD Div B				
12.58	98	Boys Yr 6 BLACK Div A				
1.00	99	Girls Yr 6 BLACK Div A				
1.02	100	Boys Yr 6 GOLD Div A	Brodie Moir	Collier	36.23	2022
1.04	101	Girls Yr 6 GOLD Div A	Lucy Morrison	Rostrata	37.45	2003
<b>4 x 50 m Freestyle Relay</b>						
1.10	102	Boys Yr 4 & U Relay BLACK		Sorrento	2:42.61	2001
1.16	103	Girls Yr 4 & U Relay BLACK		Floreat Park	2:49.52	2019
1.22	104	Boys Yr 4 & U Relay GOLD		Sorrento	2:42.61	2001
1.28	105	Girls Yr 4 & U Relay GOLD		Floreat Park	2:49.52	2019
1.34	106	Boys Yr 5 Relay BLACK		Floreat Park	2:26.80	2023
1.39	107	Girls Yr 5 Relay BLACK		Floreat Park	2:36.97	2019
1.44	108	Boys Yr 5 Relay GOLD		Floreat Park	2:26.80	2023
1.49	109	Girls Yr 5 Relay GOLD		Floreat Park	2:36.97	2019
1.54	110	Boys Yr 6 Relay BLACK		Carine	2:21.81	2019
1.58	111	Girls Yr 6 Relay BLACK		Subiaco	2:22.00	2021
2.02	112	Boys Yr 6 Relay GOLD		Carine	2:21.81	2019
2.06	113	Girls Yr 6 Relay GOLD		Carine	2:22.00	2021

**Presentations aim to finish by 2.30pm**  
Swimmers are restricted to 3 individual swims.